

- 19 22nd St & the Benjamin Franklin Pkwy**
First pickup 10:04 am, last pickup 6:04 pm
- 20 Logan Square, 20th St & Benjamin Franklin Pkwy**
First pickup 10:05 am, last pickup 6:05 pm
- 21 Logan Square, 18th St & Benjamin Franklin Pkwy**
First pickup 10:07 am, last pickup 6:07 pm
- 22 17th & Arch Sts**
First pickup 10:09 am, last pickup 6:09 pm
- 23 16th & Market Sts**
First pickup 10:11 am, last pickup 6:11 pm
- 24 12th & Market Sts**
First pickup 10:15 am, last pickup 6:15 pm
- 25 8th & Market Sts**
First pickup 10:17 am, last pickup 6:17 pm
- 26 6th & Market Sts**
First pickup 10:19 am, last Pickup 6:19 pm
- 27 2nd & Market Sts**
First pickup 10:21 am, last pickup 6:21 pm

Please see next page for a list of attractions along the Phlash route.

Please note:
Phlash Express services stops 1–14 and 18–27 only.



CONTENTS

FACTS

TOUR

EVENTS

SHOP

EAT

SLEEP



CONTENTS

PHILLY PHLASH QUICKGUIDE 2011

WELCOME ABOARD

- 4 Phlash Facts** 4
Handy info at a glance about hours, schedule, cost and Phlash Park & Ride service.

GREAT TIMES IN PHILADELPHIA

- 6 Tour the Town** 6
Philly's most popular attractions, museums, historic sites and touring options.
- 10 Events Galore** 10
Discover the city's must-see exhibits, family-friendly festivals and much more this spring, summer and fall.
- 18 Shop** 18
Philadelphia's many independently operated shops and galleries reflect the city's creative spirit.
- 22 Eat** 22
Cheesesteaks, sure, but Philly also features four-star dining and charming neighborhood bistros.
- 26 Sleep** 26
Philadelphia accommodations range from high-rise buildings to boutique hotels and bed and breakfasts.

FOR PHLASH CONCERNS
PLEASE CALL (215) 389-TOUR

PHILLY PHLASH QUICKGUIDE PHILADELPHIA HEADQUARTERS

301 S. 19th Street, Suite 1-S
Philadelphia, PA 19103
Phone: (215) 893-5100

Laura Burkhardt, Group Publisher
Rick Mollineaux, Regional Vice President
Kristina Jenkins, Editor

Josh Harting, Associate Art Director
Kari Oriolo, Account Executive
Zelinda Barnes, Advertising Services
Coordinator & Circulation Manager

MORRIS VISITOR PUBLICATIONS

699 Broad St., Suite 500
Augusta, GA 30901

Kris Miller, Director of Production
Mickey Ebenroth, Product Manager
Ken McGee, Graphic Designer
Diann Giles, Digital Imaging Manager

MVP

Morris Visitor Publications

Donna W. Kessler
President
Angela E. Allen
Controller

MORRIS COMMUNICATIONS

William S. Morris III, Chairman & CEO
William S. Morris IV, President

Philadelphia Phlash QuickGuide is published by Morris Visitor Publications (MVP), a division of Morris Communications, Co., LLC, 725 Broad St., Augusta, GA, 30901. Copyright©2011 by Morris Visitor Publications. All rights reserved.

Where QuickGuide® and the **where**® logo are registered trademarks of Morris Visitor Publications. MVP publishes Where® magazine, Where QuickGuide, IN New York and IN London magazines, and a host of other maps, guides and directories for business and leisure travelers, and is the publisher for the Hospitality Industry Association.

PHOTO: ©B. Krist/GPTMC





FRANKLIN SQUARE

PLAY A ROUND!

M. KENNEDY

With Philly Mini Golf, the *Philadelphia Park* Liberty Carousel, SquareBurger, playgrounds and more, Franklin Square is the most fun square around.



historicphiladelphia.org | 215-629-4026 | 6th & Race Sts.



Phlash Facts

Quick + Easy + Inexpensive = PHLASH

The Phlash Downtown Loop runs from **Penn's Landing** to the **Please Touch Museum**, stopping at or near many of Philadelphia's most popular hotels and attractions along the way.

■ **It's quick** with daily service every 15 minutes (9:30 am–6:00 pm) from May 1 through October 31.

■ **It's easy** with 27 stops in Center City Philadelphia including NEW STOPS near the African American Museum, Franklin Square, the Philadelphia Zoo and Please Touch Museum.

■ **It's inexpensive** at only \$2 per person per ride. An individual all-day PhlashPass is just \$5, and an all-day family PhlashPass (two adults and two children ages 6–17) is just \$10. Children under 6 and seniors are always free.

Use your **SEPTA TrailPass, TransPass, One Day Independence Pass or Family One Day Independence Pass**. A One Day Independence Pass or One Day Independence Family Pass allows for unlimited travel on the Phlash and on all buses, trolleys, subways and trains throughout the Philadelphia region. The One Day Independence Pass is \$11 for individuals or \$28 for families of up to five where at least one person is 18 years or older. Other restrictions apply. Prices subject to change.

PHLASH PARK & RIDE

- 1) Park in one of the convenient parking facilities listed below.
- 2) Ride the Phlash Downtown Loop all day for one low price.
- 3) Present your Phlash ticket or pass to receive a discount on parking.

Phlash Park & Ride facilities include:

AutoPark at Independence Mall, Fifth or Sixth Streets between Market and Arch streets

AutoPark at Old City, Second Street between Chestnut and Walnut streets

AutoPark at The Gallery, 10th Street between Market and Filbert streets

AutoPark at Jefferson, 10th Street between Market and Chestnut streets

E-Z Park, Front and Chestnut streets; 912 Arch Street; Ninth and Race streets; 38–50 N. Third Street; 2101 Chestnut Street; 1309 Locust Street

Parkway Corporation, 17 S. Eighth Street

Philadelphia Parking Authority, 801 Filbert Street

1800 Market Street Garage, 18th and Market streets

Quick Park, 231 N. Second Street; Front and Walnut streets

Refer to the map in this booklet for these parking locations. For additional Phlash Park & Ride facilities, visit www.phillyplash.com.

For more information about Phlash, call (215) 389-TOUR or visit www.phillyplash.com. For info about Philadelphia, visit www.wheretraveler.com, www.visitphilly.com and www.centercityphila.org.



Take the



to Ben Franklin's

old stomping ground, then hop

on the



to the Museum of

Archaeology and Anthropology,

and grab the



to America's

oldest zoo, until it's time to

take the



home.

THE ONE DAY INDEPENDENCE PASS gets you a day's worth of rides on SEPTA trains, subways, trolleys, and buses, plus unlimited rides on the Philly Phlash* Visitors' Loop. And you can buy your pass any time, since validation begins after the first use.



\$11 for one person, \$28 for a family of up to 5 people.**
For details, 215.580.7800 or www.SEPTA.org/fares/independence



* Philly Phlash runs May 1st – October 31st

** Some children may travel free depending on age and height. Not valid on Peak Hour Regional Rail Trains arriving at or passing through Center City Philadelphia stations prior to 9:30 a.m., except on the Airport Line. Restrictions apply for travel to Trenton and West Trenton, New Jersey. For details check SEPTA.org



Hundreds of cultural attractions. Historical sites aplenty. Countless tour options. Visitors have lots to choose from when planning their Philadelphia getaway. Many of Center City's most popular attractions are located downtown between the 26 blocks that stretch from the Delaware River on the east to the Schuylkill River on the west. Here's a look at some of the highlights.

■ **The Academy of Natural Sciences**

(Stop #21) – Founded in 1812, The Academy of Natural Sciences is the oldest natural history museum in the Americas. Hands-on experiences include Dinosaur Hall, a live tropical butterfly garden and live animals. The new Art of Science gallery features changing science-themed artworks, and naturalists present daily environmental lectures and videos. Academy scientists care for more than 17 million plant and animal specimens; tours are available. 1900 Benjamin Franklin Parkway, (215) 299-1000, www.ansp.org.

■ **Adventure Aquarium** (Stop #1


to connect with RiverLink Ferry) – “America’s most touchable aquarium” is located just over the river on the Camden Waterfront. With more than 2 million gallons of water, 6,500 animals and more than 60 exhibits, Adventure Aquarium is home to a wide variety of sea and wildlife. Recently opened Stingray Beach Club allows visitors to touch and feed

giant stingrays, and the 40-foot suspended tunnel surrounds visitors with sharks. 1 Riverside Drive, Camden, N.J., (856) 365-3300, www.adventureaquarium.com.

■ **African American Museum in Philadelphia** (Stop #4) – Founded

in 1976 and celebrating its 35th Anniversary in 2011, the African American Museum in Philadelphia is the first institution built by a major municipality to preserve, interpret and exhibit the heritage of African Americans from pre-Colonial times to the current day. Discover a critical piece of historic Philadelphia with the core exhibition, *Audacious Freedom: African Americans in Philadelphia 1776-1876*. Plus, relive one of the most pivotal moments in American history with *381 Days: The Montgomery Bus Boycott Story*. 701 Arch Street, (215) 574-0380, www.aampmuseum.org.





■ **Battleship New Jersey Museum and Memorial** (Stop #1 to connect with RiverLink Ferry) – Experience a guided or audio tour of our nation's largest and most decorated battleship—the Battleship New Jersey, located on the Camden Waterfront. Climb inside the 16" gun turret, see the bridge, learn how the crew lived and more. 62 Battleship Place, Camden, N.J., www.battleshipnewjersey.org.

■ **Big Bus Company: Philadelphia** (Stops #3 & 26) – Hop on and off these double-decker buses as much as you like with the same 24-hour ticket, which can also be used for Philadelphia Trolley Works. Tours depart from Fifth and Market Streets and stop at more than 20 sites and attractions. Courtesy van available for hotel pickups. (215) 389-TOUR, www.phillytour.com.

■ **The Franklin Institute** (Stop #20) – Located in the heart of Philadelphia, The Franklin Institute is Pennsylvania's most visited museum. Enjoy three floors of interactive exhibitions plus traveling exhibitions, including *Mummies of the World* and *CSI: The Experience*. A Fels Planetarium show is included in museum admission. IMAX and 3D Theaters offer daily shows for an additional cost. 222 N. 20th Street, (215) 448-1200, www.fi.edu.

■ **Franklin Square** (Stop #5) – Franklin Square provides family fun for people of all ages. Take a ride on the Philadelphia Park Liberty Carousel; play a round of Philly-themed miniature golf; or enjoy one of the state-of-the-art playgrounds. Sixth and Race streets, (215) 629-4026, www.historicphiladelphia.org.

■ **The Gallery at Market East** (Stop #25) – More than 100 stores and two food courts conveniently connected to the Pennsylvania Convention Center and only blocks from Independence Mall. Ninth and Market streets, (215) 625-4962, www.galleryatmarkeasteast.com.

■ **Historic Philadelphia, Inc.** (Stops #2, 3, 4, 5, 6, 26 & 27) – From day to night, Historic Philadelphia has everything you want to see and do in Philly's historic district. Visit the Betsy Ross House; hear about history where it happened at the Once Upon A Nation storytelling benches; take an Adventure Tour to Independence Hall; and enjoy Franklin Square. (215) 629-4026, www.historicphiladelphia.org.

■ **Independence Visitor Center** (Stops #3 & 26) – Begin your visit to Philly at the Independence Visitor Center, which offers brochures and maps, a friendly, multi-lingual concierge staff and tickets to Independence Hall and many other attractions. Open daily at 8:30 am. Sixth and Market streets, across from the Liberty Bell, (800) 537-7676, www.independencevisitorcenter.com.

■ **Shofuso Japanese House and Garden** (Stop #16) – In West Fairmount Park, escape to Japan by touring the Japanese House and Garden, feeding the koi fish and viewing ikebana flower arrangements. Look for the Shofuso Waterfall fusuma murals by artist Hiroshi Senju. Open May 1-Oct. 3. Lansdowne and Horticultural drives, (215) 878-5097, www.shofuso.com.

■ **Liberty 360 and Lights of Liberty** (Stop #26) – Take in Liberty 360, a 360-degree, 3-D experience in the new Historic Philadelphia Center, and witness the brand-new Lights of Liberty Show after dark. Sixth and Chestnut streets, (215) 629-4026, www.historicphiladelphia.org.

■ **National Constitution Center** (Stop #5) – Visit America's first and only museum dedicated to the Constitution. The Center's permanent exhibition, *The Story of We the People*, tells the story of the Constitution through more than 100 multimedia exhibits, photographs, sculpture and artifacts. Don't miss the award-winning theatrical performance, *Freedom Rising*, and Signers' Hall, containing 42 life-size statues of the nation's Founding Fathers. 525 Arch Street, (215) 409-6700, www.constitutioncenter.org.





■ **Penn's Landing** (Stop #1) – Penn's Landing hosts popular summer traditions including free events, festivals and fireworks. Hear fantastic free music including Smooth Jazz Summer Nights and the Sounds of R&B Concerts. Check out the PECO Multicultural Series celebrating Philadelphia's diversity. Stop by for family events like Screening Under the Stars, All-You-Can-Eat Ice Cream Festival, free ship visits, kayak lessons and more. Great Plaza at Penn's Landing, Chestnut Street & Columbus Boulevard, (215) 922-2FUN, www.delawareriverevents.com.

■ **Philadelphia Museum of Art** (Stop #14) – Whether it's the second floor galleries, that include favorites like the Arms and Armor collection and Japanese Tea House, or special exhibitions such as "Paris Through the Window: Marc Chagall and His Circle" (Perelman Building through early July) and "Rembrandt and the Face Jesus" (Main Building, August through October), there is always something to surprise, enlighten, excite, and inspire at the Philadelphia Museum of Art. 26th Street and Benjamin Franklin Parkway, (215) 763-8100, www.phila-museum.org.

■ **Philadelphia Trolley Works** (Stops #3 & 26) – A 24-hour pass allows visitors to board and re-board at any of 20 stops throughout the historic area, Center City, Penn's Landing and more. Tours are narrated by professional guides. For pickup at hotels in Center City, call for free courtesy van. Trolleys depart from Fifth and Market streets. (215) 389-TOUR, www.phillytour.com.

■ **The Philadelphia Zoo** (Stops #15 & 17) – The Philadelphia Zoo, in partnership with The Jim Henson Company, presents *X•tink•shun*, a multimedia puppet presentation featuring extinct and endangered species. This multi-dimensional, Zoo-wide exhibition will inspire with messages of conservation, discovery and saving wildlife. The cast of *X•tink•shun* puppets bring their own brand of feathers, felt and fun

exclusively to the Philadelphia Zoo in 2011. 3400 W. Girard Avenue, (215) 243-1100, www.philadelphiazoo.org.

■ **Please Touch Museum** (Stop #16) – Designed for young children, the Please Touch Museum features six interactive exhibits, daily activities and live theater performances. Housed in historic Memorial Hall in Fairmount Park, the museum also offers a family-friendly café, a century-old carousel and Centennial Grown-up Tours. 4231 Avenue of the Republic, (215) 581-3181, www.pleasetouchmuseum.org.

■ **Reading Terminal Market** (Stop #7) – One of America's largest and oldest public markets, housed since 1893 in a National Historic Landmark building, the Market offers an incredible selection of farm-fresh produce, meats, and poultry, plus seafood, cheeses, confections, flowers, kitchenware, cookbooks, jewelry, and crafts. 12th and Arch streets, (215) 922-2317, www.readingterminalmarket.org.

■ **RiverLink Ferry** (Stop #1) – May through September, the RiverLink Ferry is the quick and easy way to visit the Philadelphia and Camden, N.J., waterfronts. Departures from Penn's Landing are every hour on the hour from 9 am to 6 pm, and departures from Camden are every hour on the half-hour until 5:30 pm. Concert Express Service is provided for every Susquehanna Bank Center concert and departs every half-hour from Penn's Landing until a half-hour after the concert ends. Penn's Landing at Walnut Street and near Adventure Aquarium, (215) 925-LINK, www.riverlinkferry.com.

■ **Rodin Museum** (Stops #12 & 19) – The Rodin Museum houses one of the world's largest collections devoted to late 19th-century French sculptor Auguste Rodin, as well as a spectacular garden. Perhaps the most famous sculpture in the world, *The Thinker*, beckons visitors at the historic museum's front gate. Benjamin Franklin Parkway and 22nd Street, (215) 763-8100, www.rodinmuseum.org.



PHILADELPHIA ZOO

Jim Henson
THE JIM HENSON COMPANY
TM & © The Jim Henson Company. All Rights Reserved.



Xtinkshun
A wild puppet x•perience

PECO.

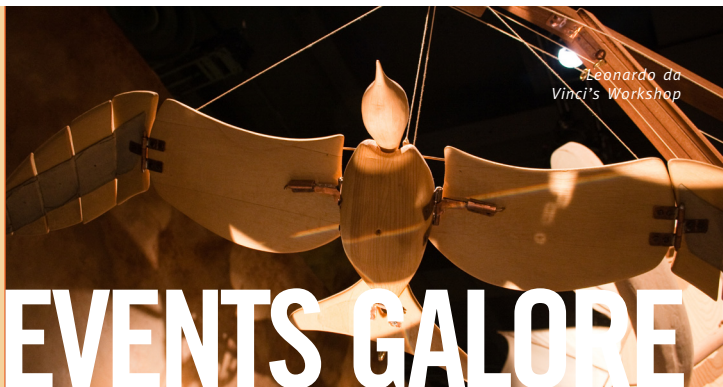
Exclusively at the Philadelphia Zoo **APRIL 9 – OCTOBER 31, 2011**



“the best...a spirited museum.” – *New York Times*

Learn about *The Story of We the People* through interactive, multimedia exhibits, artifacts, and a live theatrical production.
Buy tickets online at www.constitutioncenter.org.

NATIONAL CONSTITUTION CENTER  525 ARCH STREET, PHILADELPHIA, PA 19106



EVENTS GALORE

Art lovers, music enthusiasts, history buffs and sports fans will find 2011 packed beginning to end with festivals, art shows, parades and cultural events in Philadelphia. Here are highlights of what's going on around town.

■ THROUGH MAY 22

Leonardo da Vinci's Workshop is a highly anticipated traveling exhibition, featuring large-scale models of Leonardo's inventions and machines with state-of-the-art touch screens, enabling visitors to "turn the pages" of the artist's personal notebooks. Using physical reconstructions of his machines, codices, and more, this exhibition presents the life and passion of Leonardo da Vinci. The Franklin Institute, 222 N. 20th Street, (215) 448-1200, www.fi.edu.

■ THROUGH MAY 30

Created by the International Spy Museum, **Spies, Traitors & Saboteurs: Fear and Freedom in America** dramatically illustrates the challenge of securing our nation without compromising the civil liberties upon which it was founded. Through artifacts, multimedia elements and interactive exhibits, visitors uncover stories of espionage, treason and deception in the United States from 1776 to today. National Constitution Center, 525 Arch Street, (215) 409-6700, www.constitutioncenter.org.

■ THOUGH JUNE 5

Italian fashion designer and artist Roberto Capucci (born 1930) is revered by contemporary designers for his innovative silhouettes and masterful use of form, color, and materials. **Roberto Capucci: Art into Fashion**—fea-

turing more than eighty works, as well as original drawings and sketches—is the first survey of his work in the United States. Philadelphia Museum of Art, 26th Street and Benjamin Franklin Parkway, (215) 763-8100, www.phila-museum.org.

■ THROUGH OCTOBER 31

See The Philadelphia Zoo's partnership with The Jim Henson Company, **X•tink•shun**, a multimedia puppet presentation with messages of conservation, discovery and saving wildlife. 3400 W. Girard Avenue, (215) 243-1100, www.philadelphiazoo.org.

■ THURSDAYS THROUGH DECEMBER 22

Historic Philadelphia, Inc.'s weekly **Tiptpler's Tour** takes visitors on an excursion to four Colonial and modern-day watering holes, including Society Hill Hotel and Restaurant, National Mechanics, Triumph Brewery, and the historical City Tavern. With drinks and snacks at each of the four stops, a Colonial hostess or host leads guests in drinking songs and toasts, and shares historical facts and stories of the drinking traditions from Colonial times. Listen for Benjamin Franklin's fun phrases for someone who is drunk, including "nimtopical" and "tipsicum grave." Departs at 5:30 pm from the Historic Philadelphia Center, Sixth and Chestnut streets, (215) 629-4026, www.historicphiladelphia.org.



■ **FRIDAY AND SATURDAY THROUGH JUNE 11; TUESDAY-SATURDAY JUNE 14-AUGUST 13; FRIDAY AND SATURDAY AUGUST 19-OCTOBER 22**

The **Independence After Hours** evening walking tour visits some of the landmarks of Philadelphia's historic district and is populated with Colonial characters who bring history to life. Beginning with a three-course meal at the historic City Tavern, where Colonial townspeople entertained guests, the Colonial host then "sneaks" everyone into the Pennsylvania State House (Independence Hall), once he talks his way past the vigilant night watchman. Inside the Hall, visitors witness several Founding Fathers deep in discussion over the creation of the Declaration of Independence. See Liberty 360 after the tour for just \$5. Departs at 5:30 pm from the Historic Philadelphia Center, Sixth and Chestnut streets, (215) 629-4026, www.historicphiladelphia.org.

■ **MAY 1-31**

During **Junior Jazz Month** at the Please Touch Museum, see *Scat Cat* in the Please Touch Playhouse three times daily, and children's jazz performers each weekend. Please

Touch Museum, 4231 Avenue of the Republic, (215) 581-3181, www.pleasetouchmuseum.org.

■ **MAY 18-SEPTEMBER 14**

Head to the African American Museum in Philadelphia for **RAAMP it Up Wednesdays**, an afternoon of family fun and live performances on the plaza adjacent to the museum. African American Museum in Philadelphia, 701 Arch Street, (215) 574-0380, www.aampmuseum.org.

■ **MAY 21-SEPTEMBER 25**

Explore a tropical rainforest, navigate a polluted waterway, follow the path of a migrating hawk—all while having fun playing miniature golf. Created by the Academy of Natural Sciences, **Fore! The Planet** features 18 holes of indoor golf in which players test their putting skills and environmental knowledge while gaining a better understanding of their environment. Each hole uses playful components to explore themes such as dinosaur extinction, bat sonar, pollution and recycling. Free with museum admission. Academy of Natural Sciences, 1900 Benjamin Franklin Parkway, (215) 299-1000, www.ansp.org.

X•Tink•Shun



Roberto Capucci:
Art into Fashion



■ **SATURDAYS MAY 28–SEPTEMBER 3; JULY 3-4**

The family-friendly **Colonial Kids Quest** is a scavenger hunt through Historic Philadelphia, on a search for the Declaration of Independence. Search for clues at historic sites on this kid-friendly “whodunit” that’s great for detectives of all ages. Departs at 11 am from the Historic Philadelphia Center, Sixth and Chestnut streets, (215) 629-4026, www.historicphiladelphia.org.

■ **JUNE 18**

Attend the 15th annual **Garden State Craft Brewers Guild Beer Festival**, which includes a tour of the Battleship, a souvenir sampling mug and samples of beers from 16 New Jersey breweries. Battleship New Jersey Museum and Memorial, 62 Battleship Place, Camden, N.J., (856) 966-1652, www.battleshipnewjersey.org.

■ **JUNE 18-19**

In celebration of its 35th anniversary, the African American Museum in Philadelphia presents its 35-hour **AAMP Marathon** event, 35 hours of continuous programming, events and performances throughout the weekend. African American Museum in Philadelphia, 701 Arch Street, (215) 574-0380, www.aampmuseum.org.

■ **JUNE 18-OCTOBER 23**

Mummies of the World, the largest exhibition of mummies and related artifacts ever assembled, presents a never-before-seen collection of naturally and intentionally preserved mummies. This compelling collection, presented with reverence and dignity, includes ancient mummies and important artifacts from Asia, Oceania, South America, Europe, as well as ancient Egypt, dating as far back as 6,500 years. The Franklin Institute, 222 N. 20th Street, (215) 448-1200, www.fi.edu.

■ **JULY 1-SEPTEMBER 5**

Mount Vernon’s world-class collection in **Discover the Real George Washington: New Views from Mount Vernon** provides a new and refreshing perspective on George Washington, his achievements, legacies, family, intellectual pursuits, and entrepreneurial ventures. Nearly 100 objects, including full-scale figures of Washington, architectural models, decorative and fine art items, maps, manuscripts, and paintings reveal the personal side of Washington and uncover his roles as an entrepreneur, farmer, and businessman. National Constitution Center, 525 Arch Street, (215) 409-6700, www.constitutioncenter.org.

■ **JULY 1-SEPTEMBER 5**

To coincide with *Discover the Real George Washington*, the Center is hosting its first-ever **Kids Free Summer**. Families save a pocketful of “Washingtons” with this deal: free admission to the Center for up to four children (ages 12 and under) with one paying adult. The promotion applies to both general admission and group reservations. National Constitution Center, 525 Arch Street, (215) 409-6700, www.constitutioncenter.org.

■ **JULY 2**

Experience the best view of the fireworks over the Delaware River during **Fireworks from the Battleship**. Enjoy music, food and bar concessions and fireworks. Battleship New Jersey Museum and Memorial, 62 Battleship Place, Camden, N.J., (856) 966-1652, www.battleshipnewjersey.org.



DEAR WHAT DO I DO NOW?

STEP 1: UNPACK.

STEP 2: GET YOURSELF TO
THE INDEPENDENCE VISITOR
CENTER FOR TICKETS, MAPS,
BROCHURES, FOOD, DRINK,
SOUVENIRS AND A WHOLE
BUNCH MORE.

STEP 3: HAVE FUN — LOTS OF IT!

WITH LOVE,
PHILADELPHIA 
XOXO

P.S. THE VISITOR CENTER IS LOCATED AT 6TH
& MARKET STREETS — RIGHT ACROSS FROM THE
LIBERTY BELL — IN CASE YOU WERE WONDERING.



6th & Market Streets, (800) 537-7676

IndependenceVisitorCenter.com

Colonial Kids
Quest



■ JULY 16

Beat the heat at the **Ultimate Philadelphia Ice Cream Festival**, hosted by Bassetts Ice Cream and featuring delicious frozen desserts from some of Philadelphia's finest. The event also features arts and crafts for the kids, live music, games and more. It's an event too sweet to miss. 10 am-4 pm. Reading Terminal Market, 12th and Arch streets, (215) 922-2317, www.readingterminalmarket.org.

■ JULY 31

Help commemorate **Franklin Square's Fifth Birthday Celebration** with cake cutting and special promotions throughout the day. The free event begins at 11 am, with face painting from 12-3 pm (tickets required). Franklin Square, Sixth and Race streets, (215) 629-4026, www.historicphiladelphia.org.

■ AUGUST 11-13

Celebrate the traditions of the Pennsylvania Dutch at the annual **Pennsylvania Dutch Festival**. The three-day event takes place in Reading Terminal Market's Center Court, and features handmade crafts and traditional foods. On Saturday, the festival moves outdoors on Arch Street for Amish buggy rides and horse drawn

wagon rides, a farm-animal petting zoo, and live bluegrass music. Reading Terminal Market, 12th and Arch streets, (215) 922-2317, www.reading-terminalmarket.org.

■ AUGUST 13-14

Celebrate insects of all kinds at the Academy of Natural Science's **Bugfest**. Hear from the Academy's insect scientists, touch live insects, make an insect sculpture, and even eat a bug! Cheer your favorite cockroach racer on to victory in the big Roach Race 500. See hundreds of specimens from the Academy's world-renowned collection. Academy of Natural Sciences, 1900 Benjamin Franklin Parkway, (215) 299-1000, www.ansp.org.

■ AUGUST 13-14

Experience **World War II Weekend** on the Battleship with World War II reenactors, military vehicles, artifacts, meet veterans and more. Battleship N.J. Museum and Memorial, 62 Battleship Place, Camden, N.J., (856) 966-1652, www.battleshipnewjersey.org.

■ SEPTEMBER 1-OCTOBER 30

The Please Touch Museum's **ABC Games** mini Olympics features obstacle courses and games for the littlest athletes. Please Touch Museum, 4231 Avenue of the Republic, (215) 581-3181, www.pleasetouchmuseum.org.

■ SEPTEMBER 24

African American Museum in Philadelphia will once again participate in the seventh annual **Museum Day**, presented by Smithsonian magazine. This celebration of culture, learning and the dissemination of knowledge presents a unique opportunity for the Philadelphia region to experience all that AAMP has to offer free of charge. African American Museum in Philadelphia, 701 Arch Street, (215) 574-0380, www.aampmuseum.org.

■ OCTOBER 21-22

Have a not-so-spooky Halloween during the family-friendly **MonsterMash** at the Please Touch Museum. Please Touch Museum, 4231 Avenue of the Republic, (215) 581-3181, www.pleasetouchmuseum.org.



CENTER CITY
DISTRICT

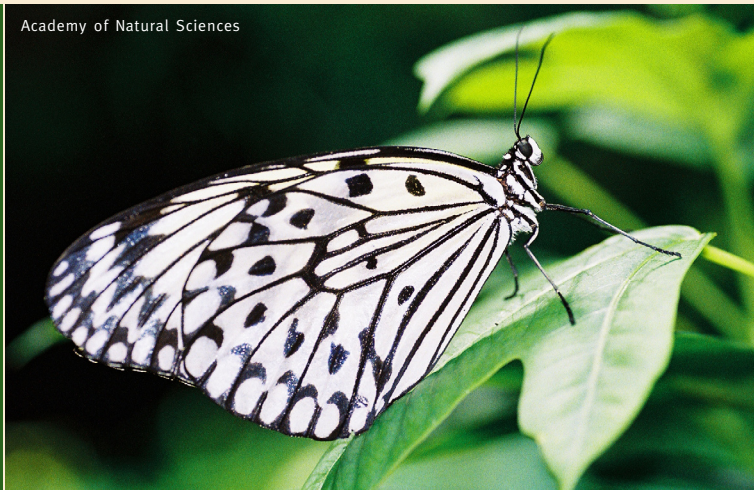
20
YEARS

CENTER CITY DISTRICT
SIPS HAPPY HOUR

\$4 COCKTAILS. \$3 WINE. \$2 BEER.
HALF-PRICED APPETIZERS*

JUNE 1 - AUG 31, WEDNESDAYS, 5-7

*At participating venues. Must be 21 or older.



■ **OCTOBER 2–JANUARY 2, 2012**

You've guessed right! **CSI: The Experience** is the traveling exhibition inspired by the hit television series "CSI." Using state-of-the-art technology, the exhibition immerses visitors in hands-on science and technology while leading them through the challenge of solving a crime mystery. The Franklin Institute, 222 N. 20th Street, (215) 448-1200, www.fi.edu.

■ **OCTOBER 15**

Fall means harvest time at the Reading Terminal Market. Bring the entire family to celebrate the foods of the Pennsylvania harvest at the annual **Harvest Festival**. Filbert Street (aka Harry Ochs Way) closes to vehicle traffic and transforms into an urban farm with hay bales and corn stalks. Kids and adults alike will have the chance to climb on an authentic farm tractor for a hay ride around the Market, take a walk through a pumpkin patch, and enjoy freshly made donuts, locally grown seasonal fruits and vegetables, candy apples, and more. Reading Terminal Market, 12th and Arch streets, (215) 922-2317, www.reading-terminalmarket.org.

■ **OCTOBER 22–23**

Celebrate Halloween at Franklin

Square. Pick a pumpkin from Franklin Square's **Pumpkin Patch** to decorate and take home and ride the **Lightning Bolt Express** train (tickets required) around the Square during this free fall event. Franklin Square, Sixth and Race streets, (215) 629-4026, www.historicphiladelphia.org.

■ **OCTOBER 22–JANUARY 16**

Bugs: Outside the Box presents a selection of greatly enlarged insect sculptures, each showcasing the beauty within the mini-beasts of the natural world. The sculptures dramatize the elegance that can be found in the exquisite biological architecture shaped by evolutionary necessity. Real insect specimens will be paired with their huge counterparts to illustrate the scale of these creatures. Academy of Natural Sciences, 1900 Benjamin Franklin Parkway, (215) 299-1000, www.ansp.org.

■ **OCTOBER 29–30**

Make your very own Trick-Or-Treat bag and follow the **Trick-Or-Treat Trail** map throughout Franklin Square, and ride the **Lightning Bolt Express** train (tickets required) during this free fall event. Franklin Square, Sixth and Race streets, (215) 629-4026, www.historicphiladelphia.org.



500° (of happiness.)

Receive \$1.00 off your
total burger purchase when
you bring in this listing.
Limit one per customer.



1504 Sansom Street Philadelphia PA 215.568.5000

Rittenhouse Row

SHOP

Philadelphia's many independently operated shops reflect the city's long history of creativity and innovation. In Old City, artsy boutiques and galleries line narrow streets. Near Rittenhouse Square, deluxe fashion and beauty destinations beckon stylish shoppers. And in neighborhood pockets all over the city, dozens of indie stores attest to the unique sensibilities of their owners. These Philly retailers are fixtures in their shops, offering customers a sense of the latest trends and old-fashioned personal service. Here are just a few of the hundreds of places to shop in the city.

■ **The Bourse Food Court & Specialty Shops** (Stop #3) – Steps from the Liberty Bell, this Victorian building is the place to find Philly souvenirs and grab a bite. Fourth and Fifth streets between Market and Chestnut streets, (215) 625-0300, www.bourse-pa.com.

■ **The Gallery at Market East** (Stops #6 & 25) – Find sensational shopping in the heart of Center City at this downtown mall. Shop at more than 100 of your favorite stores or grab a bite to eat at one of two food courts. Ninth and Market streets, (215) 625-4962, www.galleryatmarketeast.com.

■ **I. Brewster & Company Gallery** (Stop #23) – Philly's go-to gallery for contemporary, Impressionist and modern prints, originals and lithographs

from masters such as Icar, Warhol and Picasso. 1824 Chestnut Street. Second location: 22nd and Market streets. (215) 731-9200, www.ibrewster.com.

■ **Jewelers' Row** (Stops #6 & 25) – Diamonds and rubies and emeralds, oh my! The gems—many at discounted prices—sparkle in America's oldest diamond district. Sansom Street between Seventh and Eighth Streets and Eighth Street between Chestnut and Walnut Streets,

■ **Old City** (Stops #2 & 27) – Visit exciting, historic Old City to shop, dine and explore. Fabulous boutiques, renowned restaurants and eclectic galleries are all just blocks away from the Liberty Bell Center and Independence Hall. www.oldcitydistrict.org.

ESCAPE to JAPAN!

Tour our house, view our garden, feed our koi!



Located in West Fairmount Park 2 blocks from the Please Touch Museum - Philly Phlash stop #16

Open: April | Sat and Sun 11:00 am to 5:00 pm
 May through September | Wed - Fri 10:00 am to 4:00 pm | Sat and Sun 11:00 am to 5:00 pm
 October | Sat and Sun 11:00 am to 5:00 pm

Admission: \$6 for adults/\$3 student and seniors/ members and under 3 free
 Group reservations available.

Shofuso
 Japanese House and Garden

Additional charges may apply for special events and activities.

Lansdowne and Horticultural Drs. | Philadelphia, PA 19131
 t: 215.878.5097 | e: info@shofuso.com | www.shofuso.com



J. CREW
EASY SPIRIT
EXPRESS
SUNGLASS HUT
JOS. A. BANK
LOFT

THE SHOPS
Liberty at Place

16TH AND CHESTNUT STREET
 2 1 5 - 8 5 1 - 9 0 5 5
 WWW.SHOPSATLIBERTY.COM
 MON-SAT 9:30-7PM, SUN 12-6PM

■ **Franklin Square Boutique** (Stops #2 & 27) – A sweet boutique and design studio in Old City dedicated to bringing fashion-forward apparel and young designers to the area. Look for both new and vintage apparel for men and women, as well as artsy accessories and lovely jewelry. 128 N. Third Street, (215) 238-0626.

■ **Reading Terminal Market** (Stops #7 & 24) – One of America's largest and oldest farmers' markets offers an incredible selection of farm fresh produce, meats and poultry plus the finest seafood, cheeses, baked goods, kitchenware, crafts and more. Sample the tempting variety of dining choices, including local specialties and international delights. 12th and Arch streets, (215) 922-2317, www.readingterminalmarket.org.

■ **Midtown Village** (Stop #24) – This unique enclave of independent boutiques, restaurants and lofts is fast becoming the most talked-about destination in Center City. Discover amazing coffeehouses, galleries, shops and salons, as well as a delicious blend of locally owned restaurants, nightspots and more. Market to Spruce streets and Broad to 11th streets, www.midtownvillage.org.

■ **Rittenhouse Row** (Stop #23) – Shopping along Rittenhouse Row is a fashionista's delight. Big-name designers stand side-by-side with chic local retailers. Broad to 22nd streets and Pine to Market streets, www.rittenhouserow.org.

■ **The Shops at the Bellevue** (Stop #8) – This 1904 Beaux Arts building houses elegant shops, upscale restaurants, a hotel and a gourmet food court. It's also home to the best restaurant view of the Philadelphia skyline: XIX (Nineteen) on the 19th floor. Broad and Walnut streets, (215) 875-8350, www.bellevuephiladelphia.com.

■ **The Shops at Liberty Place** (Stop #23) – The ground floor of this skyscraper boasts shops galore, including J.Crew, Ann Taylor Loft and Shoe Woo. The food court offers plenty of delicious options. Chestnut Street between 16th and 17th streets, (215) 851-9055, www.shopsatliberty.com.

■ **Tselaine** (Stop #23) – You'll find fun and fabulous jewelry and accessories at this shop near Rittenhouse Square. Look for owner Elaine Tse's own collection of jewelry, plus beautiful gift items by other local artisans and great handbags by Big Buddha and Melie Bianco. 1927 Walnut Street, (215) 301-4752, www.tselaine.com.

Need more shopping suggestions?

- ★ Visit the Independence Visitor Center at Sixth & Market streets.
- ★ Ask a hotel concierge for recommendations.
- ★ Pick up the latest issue of *Where® Magazine* or the *Center City District Insider*.
- ★ Visit www.wheretraveler.com, www.centercityphila.org or www.visitphilly.com/shopping.



PHOTO: ©K. Ciappa/GPTMC

DON'T MISS THE BOAT



OPEN DAILY 10AM TO 5PM ON PENN'S LANDING
VISIT PHILLYSEAPORT.ORG FOR MORE INFORMATION

PHLASH STOP #1

BUY ONE ADMISSION
GET ONE 1/2 PRICE



Independence
Seaport Museum

COUPON CODE : PHLASH
EXP: 09/30/11



I. BREWSTER & COMPANY

GALLERY

Specializing in:

Andy Warhol • Louis Icart • Dali • Picasso
Miro • Chagall • Neiman • Tarkay • Lichtenstein
Jerry Garcia • Animation • Max • Frankenthaler
Dine • Renoir • Pino • Pissarro • Degas
AND

ALL CONTEMPORARY ARTISTS
AT WHOLESALE PRICES

Visit Our Showroom Annex At

2200 MARKET STREET

(CORNER OF 22ND AND MARKET STS)

215-731-9200

www.ibrewster.com • mail@ibrewster.com

Open 7 days

EAT

Those who think cheesesteak when thinking Philly food: Think again! Long known for its role in American history, passionate sports fans and, yes, cheesesteaks, Philadelphia continues to emerge as one of the country's finest culinary destinations. Throughout Center City, four-star dining rooms coexist with unassuming neighborhood bistros; boisterous upscale taprooms counterbalance romantic foodie hideaways; and family-operated BYOB (bring-your-own-bottle) establishments share the sidewalk with high-profile eateries owned by famous chefs and restaurateurs. Here's a look at some spots that make the city's dining scene tastier than ever.

■ **13** (Stops #7 & 24) At this stylish restaurant and bar in the Philadelphia Marriott Downtown, enjoy delicious American cuisine, flat-screen TVs and drink specials. 1201 Market Street, (215) 625-6795, www.philadelphiamarriott.com.

■ **Amada** (Stops #2 & 27) Chef Jose Garces, an "Iron Chef," runs this sophisticated Spanish restaurant with a mile-long list of exquisite tapas and fresh cocktails. 217 Chestnut Street, (215) 625-2450, www.amadarestaurant.com.

■ **Capriccio Café and Espresso Bar at Café Cret** (Stop #10) This charming café offers outdoor seating on the Benjamin Franklin Parkway, free WiFi, and a menu of pastries, grilled paninis, soups, salads and more. 16th Street and Benjamin Franklin Parkway, (215) 735-9797, www.capricciocafe.com.

■ **Cherry Street Tavern** (Stop #20) Feel like a local at this wood-paneled bar a short stroll from the Parkway museums and area hotels. Enjoy home-made chili, hot roast beef and Cherry Street Tavern's pork sandwiches while kicking back. 22nd and Cherry streets, (215) 561-5683.

Center City District Sips, \$4 cocktails, \$3 wines, \$2 beers and half-price appetizers. The price is right for this popular summertime event every Wednesday 5 – 7 pm at participating restaurants and bars, June through August. For more details, visit www.centercityphila.org.

Center City District Restaurant Week, presented by TD Bank – Three courses. More than 100 restaurants. Just \$35*. For dates and details, visit www.centercityphila.org/restaurantweek.

* Does not include tax, alcohol or gratuity

Need more dining suggestions?

★ Visit the Independence Visitor Center at Sixth & Market streets.

★ Ask a hotel concierge for recommendations.

★ Pick up the latest issue of *Where® Magazine* or the *Center City District Insider*.

★ Visit www.wheretraveler.com, www.visitphilly.com/dining or www.centercityphila.org.





DECEMBER 1773: City Tavern opens boasting the second largest ballroom in British North America.

SEPTEMBER 1774: City Tavern is the unofficial meeting place of the first Continental Congress. Participants include George Washington, Thomas Jefferson & John Adams.

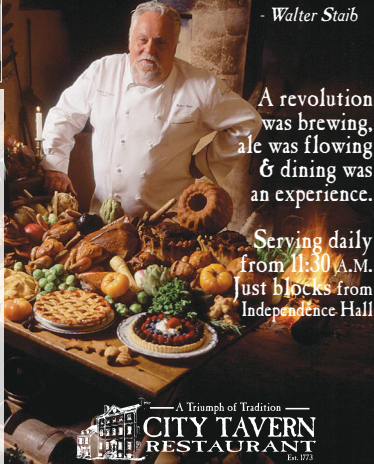
JULY 1777: America's first Fourth of July celebration is held at City Tavern.

AUGUST 1777: General Washington uses City Tavern as the official headquarters of the Continental Army.

JANUARY 1789: City Tavern is the headquarters of the Merchant's Coffee House & Place of Exchange.

"FOLLOW US BACK TO THE 18TH CENTURY"

- Walter Staib



A revolution was brewing, ale was flowing & dining was an experience.

Serving daily from 11:30 A.M. just blocks from Independence Hall



A Triumph of Tradition
CITY TAVERN
RESTAURANT
EST. 1773

138 South 2nd St. • Philadelphia, PA 19106 • (215) 413-1443 www.citytavern.com • info@citytavern.com

CRUISES
from
\$27.95



INTRODUCING The Best of Philadelphia on the Water.

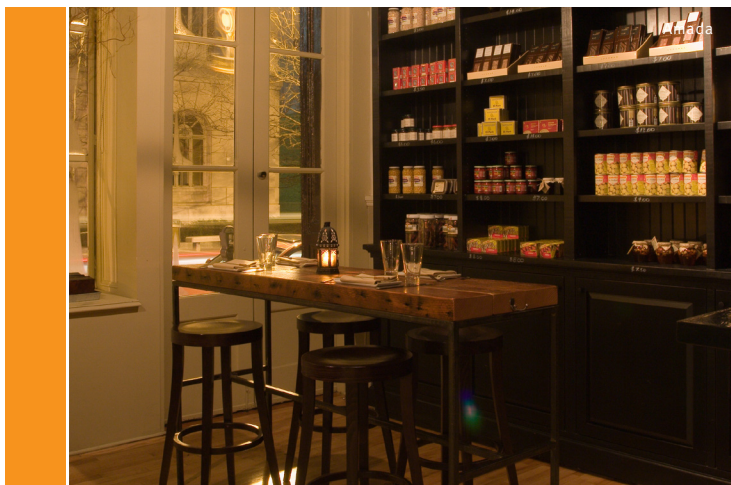


A cruise aboard the new *Philadelphia Belle* combines sights, sounds and flavors unique to Philadelphia. Choose a lunch, brunch or dinner cruise or select our cruise-only option starting at just \$27.95 and enjoy our "Best of Philadelphia" experience.



LUNCH | BRUNCH | DINNER | SIGHTSEEING

888.516.4890 | PhiladelphiaBelle.com



■ City Garden Chinese Restaurant

(Stop #22) Delicate flavors, large portions and a convenient location make City Garden a perfect destination for Chinese cuisine. 1801 John F. Kennedy Boulevard, (215) 569-8686.

■ City Tavern (Stops #2 & 27)

– Celebrated chef/proprietor Walter Staib follows late 18th-century recipes to create Colonial dishes at this famed restaurant. Reservations suggested. 138 S. Second Street, (215) 413-1443, www.citytavern.com.

■ Darling's Cheesecake Café (Stop

#20) Darling's deals in Philly-style cheesecakes, as well as breakfast, lunch, dinner, and coffee. 2100 Spring Street (behind The Franklin Institute), (215) 496-9611. Second location: 20th and Pine streets, (215) 545-5745, www.darlingscheesecake.com.

■ DiNardo's Famous Crabs (Stops #2

& 27) This Philly favorite is renowned for steamed hard-shell crabs and sautéed garlic crabs. DiNardo's also serves fresh seafood, chicken, steaks and pasta. 312 Race Street, (215) 925-5115, www.dinardos.com.

■ Fork (Stops #2 & 27) One of Old

City's original restaurant pioneers, Fork offers simple elegance with an open kitchen. Adjacent to the restaurant is Fork: etc., a gourmet market. 306 Market Street, (215) 625-9425, www.forkrestaurant.com.

■ Gigi (Stops #2 & 27) Dine on an

international menu featuring everything from edamame to taquitos. Featuring the largest outdoor dining area in Old City. 319 Market Street, (215) 574-8880, www.gigiphilly.com.

■ Hard Rock Cafe (Stop #24) Philly's

version of the international phenomenon is conveniently located steps from the Pennsylvania Convention Center. The restaurant is known for its all-American fare and music memorabilia. 12th and Market streets, (215) 238-1000, www.hardrock.com.

■ McCormick & Schmick's (Stop

#8) Pacific Northwest fare comes to Philadelphia with fresh ocean catches, oysters, draft beers and Northwest wines. 1 S. Broad Street, (215) 568-6888, www.mccormickandschmicks.com.



■ **Philadelphia Belle** (Stop #1) Enjoy Philadelphia on a grand riverboat dinner cruise. Options include a cruise-and-dine package or a cruise-only package, with a la carte meal choices. Options include sightseeing cruises, moonlight cruises, and buffet lunch, dinner and weekend brunch cruises. Pier 3 at Penn's Landing, (215) 717-1600, www.philadelphiaibelle.com.

■ **Positano Coast by Aldo Lamberti** (Stops #2 & 27) Walk up a staircase to this stylish second-floor restaurant, where executive chef Pippo Lamberti prepares inspired Italian dishes. In warmer weather, dine alfresco on the patio or in the airy Sopra Lounge. 212 Walnut Street, Second Floor, (215) 238-0499, www.lambertis.com.

■ **R2L** (Stop #23) —On the 37th floor of Two Liberty Place, chef Daniel Stern gives a modern twist to traditional American flavors. The stunning skyline views make R2L one of Philly's most spectacular dining destinations. 50 S. 16th Street, 37th Floor, (215) 564-5337, www.r2lrestaurant.com.

■ **Ristorante Panorama** (Stops #2 & 27) Start with a drink at Il Bar, which houses the largest wine preservation

and dispensing system in the world with over 120 wines by the glass. Then move into the elegant, frescoed dining room for creative Italian dishes and decadent desserts. Front and Market streets, (215) 922-7800, www.pennsviewhotel.com.

■ **Solefood** (Stops #7 & 24) You'll find this sophisticated restaurant and bar in the dramatic Art Deco skyscraper, the PSFS Building, now the Loews Philadelphia Hotel. Chef Tom Harkens prepares a vast array of seafood dishes. 1200 Market Street, (215) 231-7300, www.loewshotels.com.

■ **Triumph Brewing Company** (Stops #2 & 27) Class and comfort blend seamlessly at this popular Old City brewery. Settle in for tasty renditions of favorites like fish and chips or simply enjoy one of Triumph's many handcrafted, in-house beers. 117 Chestnut Street, (215) 625-0855, www.triumphbrewing.com.

■ **Water Works Restaurant and Lounge** (Stop #14) This National Historic Landmark is now home to world-class cuisine and an enchanting dining experience overlooking the Schuylkill River and Boathouse Row. 40 Water Works Drive, (215) 236-9000, www.thewaterworksrestaurant.com.



PHOTO: ©Hard Rock Cafe



SLEEP

Luxurious high-rise buildings, boutique hotels and charming bed and breakfasts make overnight stays in Philadelphia a real getaway. Many of the city's lodging options are in restored landmark buildings. Some are small. Some are stately. Some have suites. Several have great bars and restaurants, and all offer service with a smile. Here's a look at some accommodation options on or near the Phlash route.

■ **Alexander Inn** (Stops #7 & 24) – Elegant modern Deco surroundings set the tone at this conveniently located Midtown Village boutique hotel, equipped with DirecTV, a fitness center, a breakfast buffet and more. 12th and Spruce streets, (215) 923-3535, www.alexanderinn.com.

■ **Best Western Independence Park Hotel** (Stops #2 & 27) – Affordable luxury and 21st-century comforts in a 19th-century building make this hotel a popular spot for visitors. Plus, it's located steps away from Independence Hall. Complimentary European breakfast is served daily. 235 Chestnut Street, (215) 922-4443, www.independenceparkhotel.com.

■ **Courtyard by Marriott Philadelphia** (Stop #8) – Formerly Philadelphia's City Hall Annex, this 17-story building, erected in 1926, now houses nearly 500 hotel rooms. Spacious rooms, large desks and high-speed Internet access are just a few of the hotel's amenities. 21 Juniper Street, (215) 496-3200, www.marriott.com.

■ **Embassy Suites Hotel Center City** (Stop #21) – Two-room suites, equipped with in-room microwaves and refrigerators and high-speed Internet access, offer spectacular views of the Benjamin Franklin Parkway and city skyline. 1776 Benjamin Franklin Parkway, (215) 561-1776, www.embassysuites.com.

■ **Four Seasons Hotel Philadelphia** (Stop #21) – This recently renovated AAA Five Diamond Award-winning hotel has been delighting guests since 1983. Visit the celebrated Fountain Restaurant and the intimate Swann Lounge and Café for great views of Logan Square and the Swann Memorial Fountain.
1 Logan Square, (215) 963-1500, www.fourseasons.com/philadelphia.

■ **Hotel Palomar Philadelphia** (Stop #23) – Hotel Palomar Philadelphia, a Kimpton Hotel, is a unique, luxury boutique hotel just steps from Rittenhouse Square. As Kimpton's first LEED-registered hotel, Hotel Palomar is a testament to superior eco-friendly design and genuinely warm hospitality. Pets are welcome. Enjoy globally inspired fare at Square 1682 restaurant. 117 S. 17th Street, (215) 563-5006, www.hotelpalomar-philadelphia.com.

■ **Le Méridien Philadelphia** (Stops #7 & 24) – Originally a YMCA, Le Méridien Philadelphia is housed in a Georgian revival-style structure, and

located less than one block from the Pennsylvania Convention Center. 1421 Arch Street, (215) 422-8200, www.lemeridien.com/philadelphia.

■ **Loews Philadelphia Hotel** (Stops #7 & 24) – This former architectural landmark-turned-elegant hotel boasts a spa, the latest in-room technology and a convenient location. Pets are welcome. 1200 Market Street, (215) 627-1200, www.loewshotel.com.

■ **Penn's View Hotel** (Stops #2 & 27) – Enjoy European-style hospitality at this family-owned, luxury boutique hotel, located just steps from historic attractions, theaters, restaurants and shops. Front and Market streets, (215) 922-7600, www.pennsviewhotel.com.

■ **Philadelphia Marriott Downtown** (Stops #7 & 24) – Steps from the Pennsylvania Convention Center, this centrally located hotel is popular with all types of travelers thanks to easy access to the city's finest restaurants, shops and entertainment options. 1201 Market Street, (215) 625-2900, www.philadelphiamarriott.com.



PHOTO: ©Sheraton Society Hill Hotel



■ **Residence Inn Philadelphia Center City** (Stop #8) – An extended-stay hotel, the Residence Inn makes being away from home as comfortable as possible. Each guest room comes with living, working and dining areas, and complimentary high-speed Internet access and a hot buffet breakfast are available. 1 E. Penn Square, (215) 557-0005, www.marriott.com.

■ **The Ritz-Carlton Philadelphia** (Stop #23) – The attentive staff at this historic landmark hotel pampers guests with amenities such as a Bath Butler and Bath Menu, pillow selections and other indulgences. 10 Avenue of the Arts (Broad Street), (215) 523-8000, www.ritzcarlton.com/hotels/philadelphia.

■ **Sheraton Society Hill** (Stop #1) – In the Sheraton Sweet Sleeper Bed, visitors and their pets can enjoy a

good night's sleep in the heart of "America's Most Historic Square Mile." 1 Dock Street, (215) 238-6000, www.sheraton.com/societyhill.

■ **Sofitel Philadelphia** (Stop #23) – In the former home of the Philadelphia Stock Exchange and located in the Rittenhouse Row neighborhood, the Sofitel Philadelphia is a European-style hotel with a reputation for pampering guests and their pets. 120 S. 17th Street, (215) 569-8300, www.sofitel.com.

Visit Philadelphia again soon. For lodging information and to book your stay, go to www.visitphilly.com.